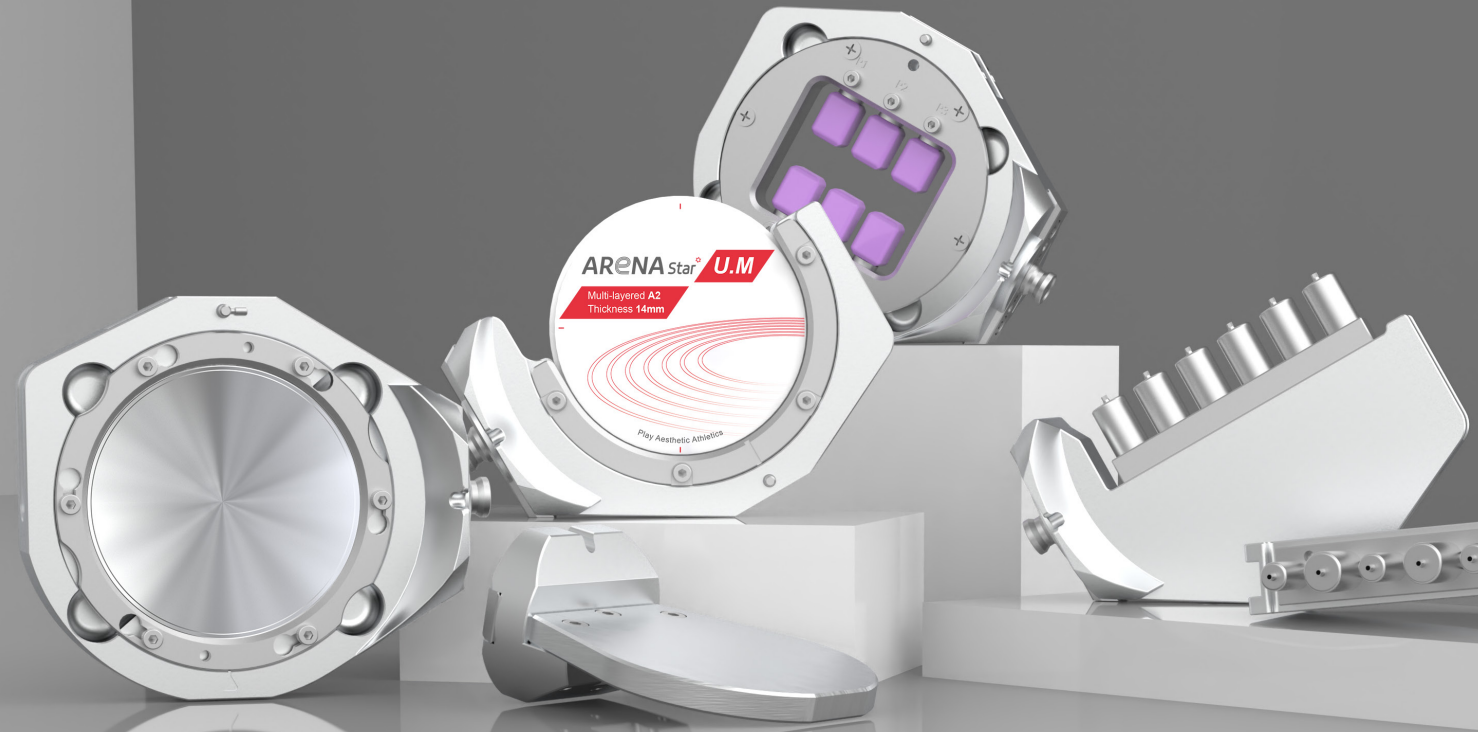
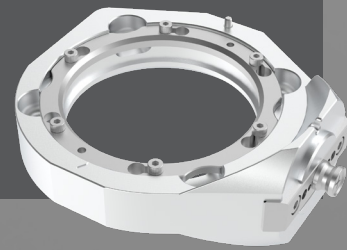


New Paradigm of Milling machine, A7 & A7L



Jig & Cartridge

Disk Jig (O Type)



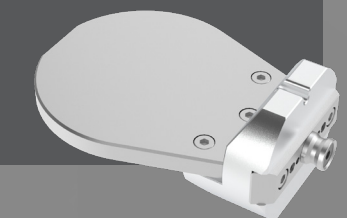
Disk Jig (C Type)



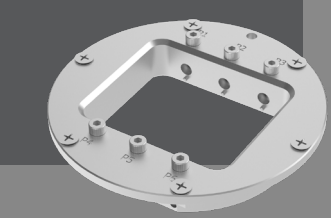
Pre-milled Jig



Calibration jig



Glass Ceramic Cartridge



A7 & A7L

The 'Master' of milling

Specifications

Model	A7	A7L
Axis	5 Axis	5 Axis
Processing	Wet & Dry	Wet & Dry
Max. RPM	60,000	60,000
Spindle Motor Type	AC	AC
Spindle Power (Continuous)	2.2kw	2.2kw
Spindle Power (Max)	3.6kw	3.6kw
A.T.C	20	20
Tool Shank(mm)	ø6	ø6
Motor	Servo	Servo
Drive Mechanism	Ball Screw	Ball Screw
Way System	Linear Guide	Linear Guide
Total Size(W*D*H)	650*870*1750	1060*900*1750
Weight(Machine/Table)	230kg/90kg	310kg/110kg
Travel	X, Y, Z axis	185*120*120
	A / B axis	360° / +30° ~ -65°
Disk jig or Cartridge Type	O/C/OCC/GLASS CERAMIC	O/C/OCC/GLASS CERAMIC
Number of Jig	-	12
Jig exchange	Manual	Auto
Disk jig Clamping system	Zeropoint clamping	Zeropoint clamping

* The specifications are subject to change without notice to improve product quality.



23, Gukjegwahak 11-ro, Yuseong-gu, Daejeon, 34002, Republic of Korea
Tel. +82-42-935-3644 Fax. +82-42-935-3645
E-mail. info@arumdentistry.com



Ver. 2025-Nov-EN

With powerful force of 1.5 kN, the cartridge is firmly secured, providing excellent positional accuracy. It automatically aligns the central axis, enabling stable milling of even the most complex shapes.

1.5kN

24hours Custom abutment

Through the 12-Jig changer, custom abutments are automatically exchanged and milled, offering better productivity compared to CNC lathes.

By Mobile

No matter where you are or what you're doing

Remote Equipment Control

No matter where you are or what you're doing, you can turn the machine on and off, upload NC files, replace tools, and manage fine controls all through the app on your smartphone.

Real-time Streaming

Monitor the milling process live through the internal camera.

Dash Cam system

In case of an error, you can review video footage of the incident, allowing for more accurate troubleshooting and faster customer support.

Tool Management

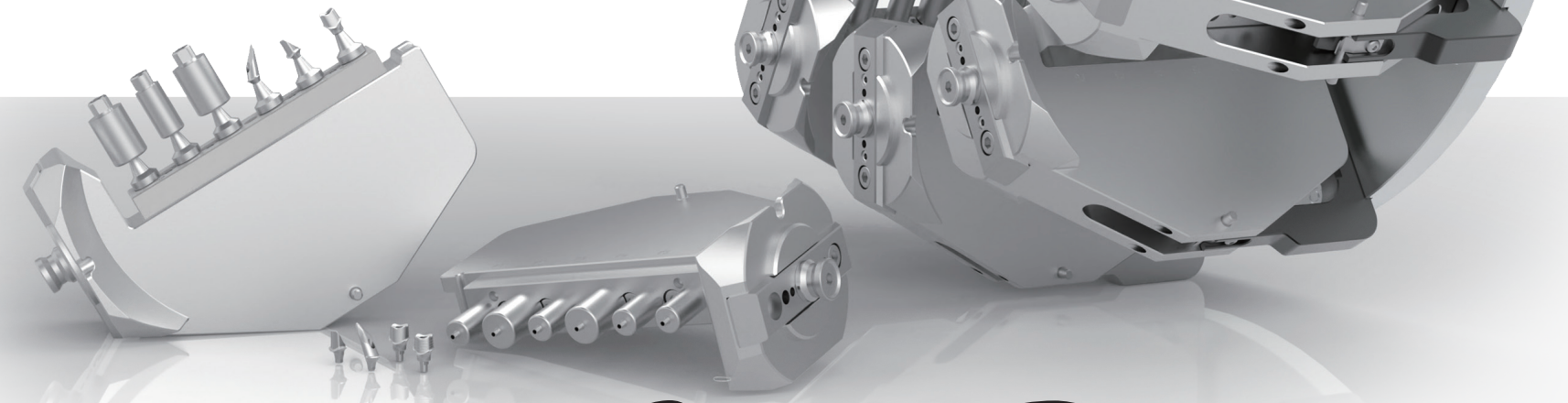
Check the remaining lifespan of tools currently in use, and receive alerts when tools are nearing the end of their lifespan to ensure timely replacement.

Production/Support Management

Track the number of restorations produced over a set period and gain insights into which materials are most frequently used. Assign specific milling tasks to individual employees and manage machine access permissions. (continuously updated)



** Requires installation of the 'ARUM connect' application (continuously updated).



New Paradigm

Zero Point System

The fact that the zero point is maintained even when the jig is replaced provides a crucial foundation for achieving accurate and consistent results. As a result, the output also consistently maintains perfect quality.

Prosthetics milled with a repeatability accuracy of less than 20 microns boast the highest level of precision. Experience prosthetic results that no other milling machine can replicate.

≤20μm

Special Tools

ARUM's special tools, including Drill Tools, Reamer Tools, and Thread Tools, ensure perfect milling to enhance the quality of the final prosthetics.



Applications

Master Fix (Crown)	Implant Bar	Screw-Retained Bridge (Crown & Coping)
Customized Abutment	Hybrid Abutment	All on X
Inlay & Onlay	Crown & Coping Crown & Coping Bridge	Bite Splint

Materials

[Disk type]

PMMA & PEEK	Clear	Wax	Nanocomposite

[Block type]

--	--	--	--

[Pre-milled type]