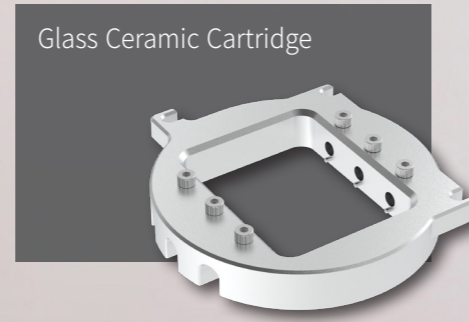
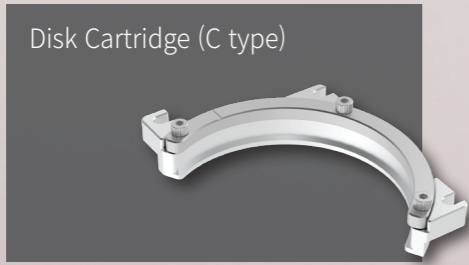
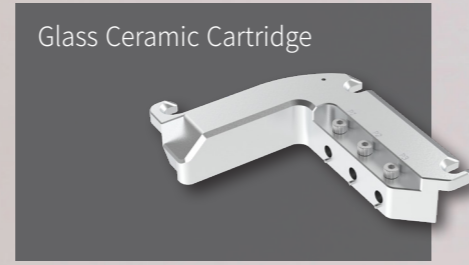
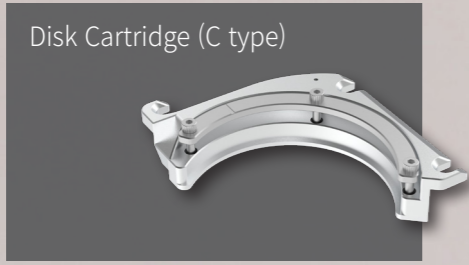


A3 Cartridge



A3L Cartridge



A3 & A3L

Maximizing Efficiency, Embracing Value

Specifications

Model	A3	A3L	
Axis	5 Axis	5 Axis	
Processing	Dry	Dry	
Max. RPM	60,000	60,000	
Spindle Motor Type	DC	DC	
Spindle Power (Continuous)	0.45kw	0.45kw	
Spindle Power (Max)	0.8kw	0.8kw	
A.T.C	12	12	
Tool Shank(mm)	Ø4	Ø4	
Motor	Stepping	Stepping	
Drive Mechanism	Ball Screw	Ball Screw	
Way System	Linear Guide	Linear Guide	
Total Size(W*D*H)	490*700*725	848*685*725	
Weight(Machine)	97kg	145kg	
Travel	X, Y, Z axis	155*110*125	155*155*145
	A / B axis	360° / +30° ~ -30°	360° / +30° ~ -30°
Disk jig or Cartridge Type	C type / Glass Ceramic type	C type/ Glass Ceramic type	
Number of Jig	-	7	
Jig exchange	Manual	Auto	
Disk jig Clamping system	Bolt Clamping	Spring Clamping	



* The specifications are subject to change without notice to improve product quality.



23, Gukjegwahak 11-ro, Yuseong-gu, Daejeon, 34002, Republic of Korea
 Tel. +82-42-935-3644 Fax. +82-42-935-3645
 E-mail. info@arumdentistry.com



Ver. 2025-Nov-EN



Anywhere you want

IoT with A3&A3L

Manage your milling machine and monitor milling progress in real time through the app, anytime, anywhere.

Download the Mobile App



[iOS]

[Android]

Perfectly sized for any lab environment, allowing for easy installation in any location.



Auto Calibration

With a new automatic calibration feature, users no longer need to set it manually. This function deliver more stable performance.

24Hours Disk Milling

Thanks to the 7 disk changers, disk milling runs non-stop for 24 hours. Significantly increase the efficiency of your work.



Auto Cleaning

The auto-cleaning function saves your valuable time while preventing disk changer errors.

Applications



Master Fix (Crown)



Crown & Coping
Crown & Coping Bridge



Screw-Retained Bridge
(Crown & Coping)



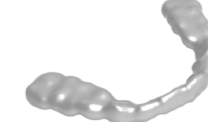
Inlay & Onlay



Hybrid Abutment



Full Arch

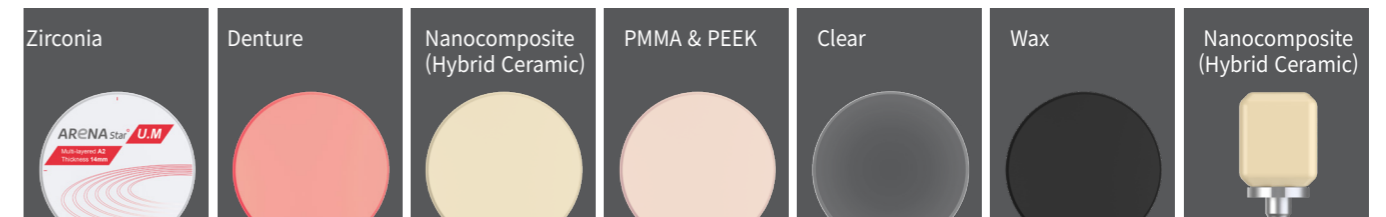


Bite Splint



Denture

Materials [Disk type]



[Block type]